

ELLE

I'm going back to where I make sense.

PAULETTE

You're not making any right now. Honey, what happened?

ELLE

All this time I thought I was proving myself and making a difference... but it turns out I'm just one big blonde joke. That's all anyone's ever gonna see.

(#32 – LEGALLY BLONDE REMIX (PART 1) begins.)

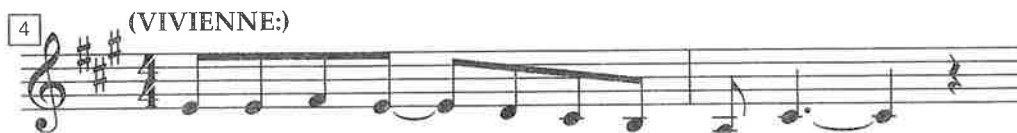
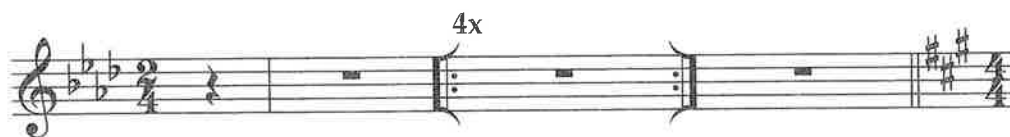
LEGALLY BLONDE REMIX (PART 1)

(VIVIENNE reveals herself from beneath a hair dryer, having overheard this.)

VIVIENNE: That's not what I see.

ELLE: Vivienne?!

VIVIENNE: We girls have to stick together.



I used to pray— for the day you'd leave.—



Swore up and down— you did not be-long.—



But when I'm wrong then I say I'm wrong, And I was wrong

10

— a - bout you. — So list-en up!

12

I see no end — to what you'll a - chieve...

14

That's on - ly if — you don't turn and run. — You

16

proved it to me, — now show ev - 'ry-one what you can do.

(A SALON WORKER hands
ELLE a dark blue suit.)

18

ALL:

— And you look great in dark blue! —

20

VIVIENNE:

Get back in the game, —

(ALL:)

Oo... —

21

Back on the case. Take a good look

Oo... Oo..

23

at my face; I'm not a fool,

Oo.. Oo.. Oo Oo...

25

And, as a rule, I do not

oo...

27

bond... But I see a star,

Ne-ver known her to bond! Oo

29

— You're my new muse;— You've got the *best*
 — sha la la, Oo,— sha la la Oo,

31

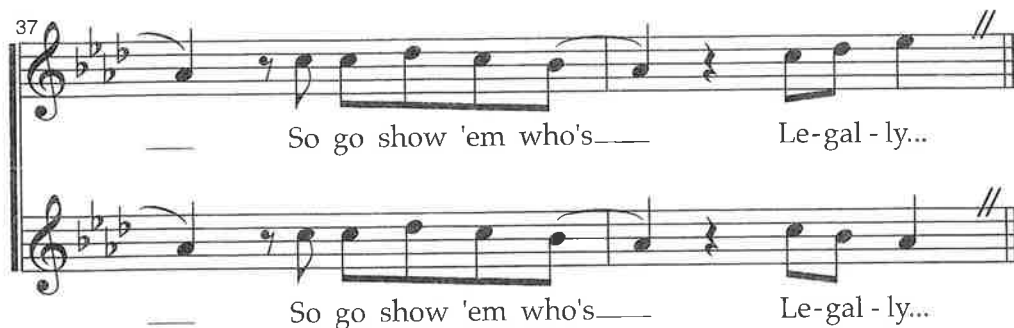
— frick-in' shoes!— And you lit a fuse,
 — sha la la Oo!— You lit a fuse,

33

— So go show 'em who's— Le-gal - ly
 — So go show 'em who's— Le-gal-ly...

35

Blonde!— Yes, you lit a fuse,
 Sha la la la— la la! You lit a fuse,



(ELLE, not unkindly, pushes the offered suit away.)

ELLE

Sorry, Vivienne, you keep it. I'm never wearing that again.

(ELLE picks up her luggage purposefully and walks grandly through the door, slamming it shut behind her. There is an awkward pause. PAULETTE knocks sheepishly on the door.)

PAULETTE

Um... honey? You're in the supply closet.

ELLE

(offstage)

I know!

(#33 – LEGALLY BLONDE REMIX (PART 2) begins.)

LEGALLY BLONDE REMIX (PART 2)

(ELLE:) I said I'm never wearing that again.
I'm wearing THIS!

(ELLE bursts through the door, now dressed in a fab pink lawyer suit. EVERYONE onstage cheers.)
KIKI: Fierce!

ELLE:

